

# ROKA

Select collection

Select collection

**Select collection**

Select collection

Select collection

Select your entrance



# ROKA

Select collection

Select collection

**Select collection**

Select collection

Select collection

Select your entrance





Select 10 | RAL 9005 MS | Example of application

## ABOUT THE COLLECTION

In response to the growing expectations of customers who value excellent thermal insulation, security and timeless design, we have created the ROKA Select Doors collection. This is the ideal solution for those who are looking for solid, yet aesthetically pleasing exterior doors of reliable quality.

In order to provide our customers with an elegant design and stylish appearance of the entrance area, we have carefully selected 22 door models. Each has a unique design that blends perfectly with a variety of architectural styles. Our doors are perfect for single-family homes, combining aesthetics with functionality.

Quality is our priority, which is why all doors in the Select collection are made from the renowned Wicona profiles. We use high quality

materials and hardware, mainly from recognized German manufacturers, which guarantees durability and safety. In addition, our collection offers a wide range of personalization options, allowing you to perfectly match the door to your individual needs and the style of your home.

Discover the ROKA Select Doors collection and give your entrance a unique character that combines elegance with reliability.

In fact, thinking in terms of visionary building means thinking responsibly about the future and being aware of the limits of our resources. We are convinced that the building of the future cannot function without sustainable material cycles.

We reaffirm our commitment to sustainability with Hydro CIRCAL aluminum system solutions, which are among the most environmentally friendly aluminum alloys in our industry. Hydro CIRCAL is a range of high quality aluminum alloys made from nearly 80% post-consumer recycled aluminum. This includes old materials such as facades and windows that have been removed from buildings and fully recycled. The process of melting down aluminum for reuse uses only 5% of the energy required to produce virgin

aluminum. The higher the recycling rate, the better for our cities and the environment.

By using renewable energy and modern technology, Hydro can produce cleaner aluminum than ever before. The production process is fully transparent and our products are certified by independent third parties (DNVGL). This certified production process is a real revolution in construction. By using renewable energy and modern technology, Hydro can produce cleaner aluminum than ever before. The production process is fully transparent and our products are certified by independent third parties (DNVGL). This certified production process is a real revolution in construction.

The RC2 security rating defines the door's level of resistance to burglary, particularly to basic methods of attack, according to DIN 1627. An optional security package further enhances your protection with P4A glass, reinforced hinge-side security features and certified burglar-resistant cylinders. These advanced solutions effectively increase the level of security by protecting the door from unauthorized access and removal attempts.



## PREMIUM QUALITY

Choose the superior quality that comes from precision workmanship and the use of materials from renowned manufacturers that guarantee durability and exceptional aesthetics.

## PERSONALIZATION

Customize your door with a choice of three types of exclusive exterior finishes to give it a unique character and personality.

## THE INSIDE MATTERS

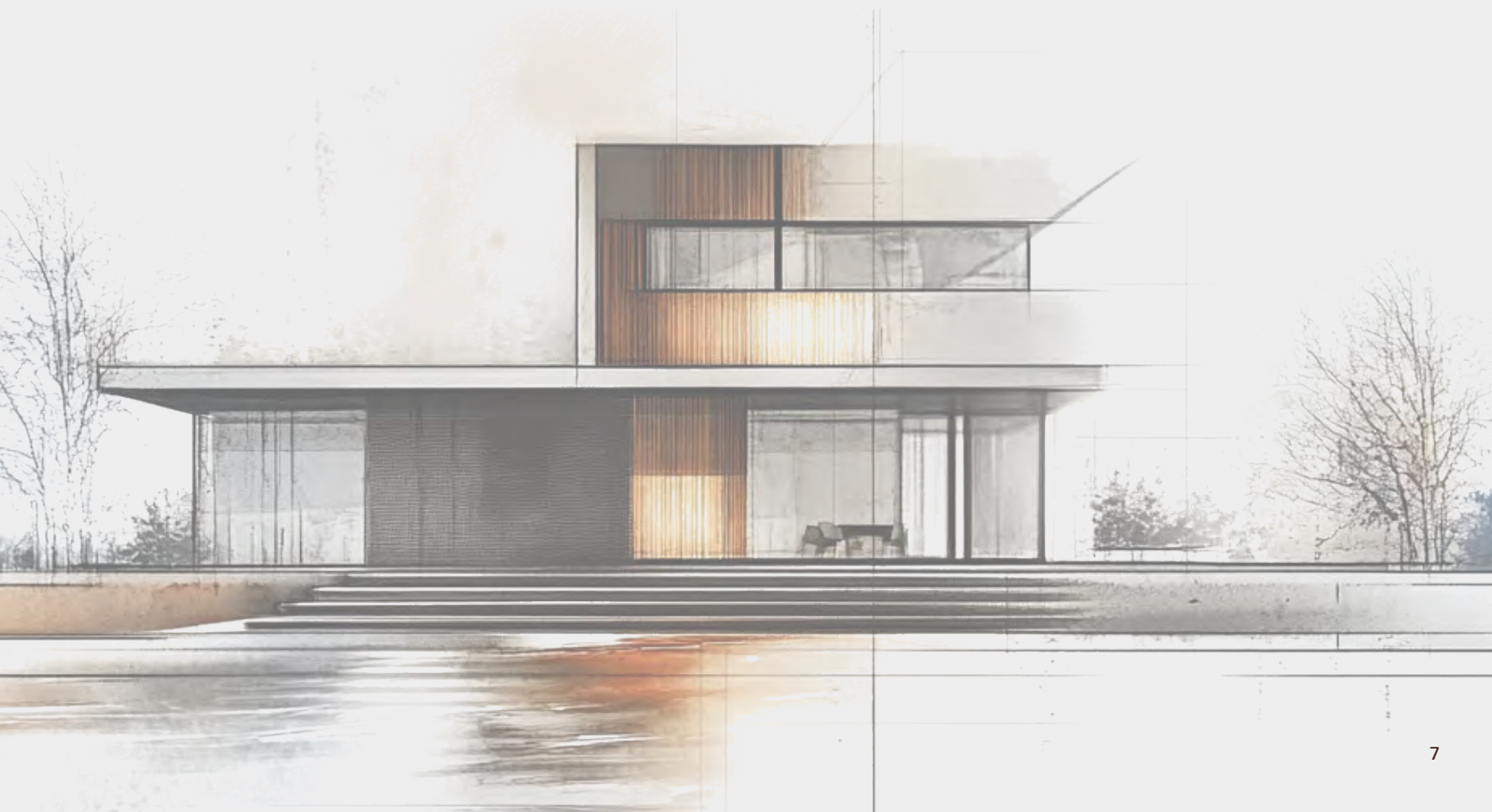
Personalize the inside of your door to harmonize with your interior design for a cohesive and elegant look.

## SMART ACCESSORIES

Enhance your door with smart accessories like solid locks and advanced access systems for added convenience and security.

## MORE YOURS

Customize your door by choosing from three sets designed to meet a variety of aesthetic and stylistic needs.

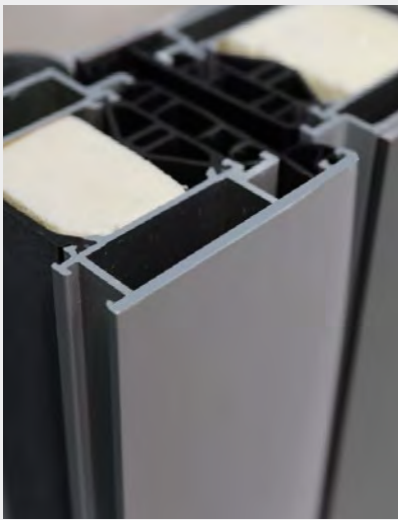


## PROFILE EDGEPRO

Why did we choose WICONA profiles? With over 30 years of experience in the industry, our choice of partner had to be carefully considered. We are proud to have been working with WICONA since 2010, creating unique, technologically advanced solutions together. With a 70-year tradition, the company embodies the best of German engineering: inno-

vation, unparalleled quality and the ability to meet the highest industry standards. Using the latest technologies, their products are a true symbiosis of aesthetics and functionality, perfectly meeting the demands of modern design and technical challenges.





#### EDGE PRO PROFILE SYSTEM

---

Flush sash on the inside and outside

---

Aesthetic design

---

Thermal break in the frame and sash profile

---

#### SEALING LEVELS

---

Ensures high tightness with advanced multi-point sealing system. Pressure seals with molded corners provide longer life.



#### THRESHOLD

---

Aluminum, thermally insulated

---

High performance in rain, wind and effective soundproofing

#### ROBUST CORNER PROFILES

---

Patented corner bracket technology with additional adhesive distribution on both sides

---

Provides a durable and stable corner connection



#### SASH FLUSH ON BOTH SIDES

---

Sash flush on both sides

---

Edge Pro 75 mm profile

---

3 mm thick outer sheet



#### MASKING ADAPTERS

---

Specially designed masking adapters for screws and mounting components for an aesthetically pleasing appearance and perfect finish.



## Select Collection highlights

15 – 25

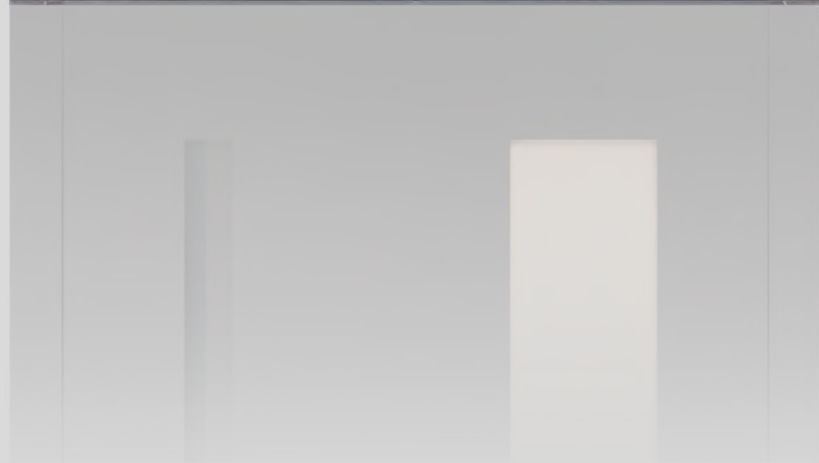
PERSONALIZE YOUR DOOR

Choose from three packages to find the one that best suits your needs.

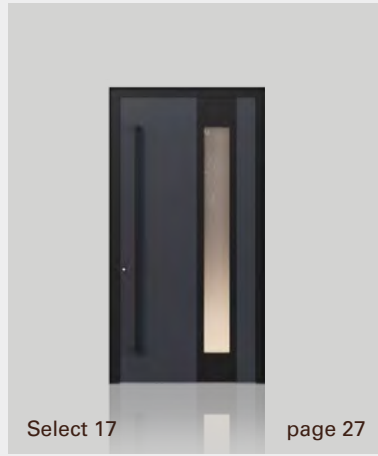
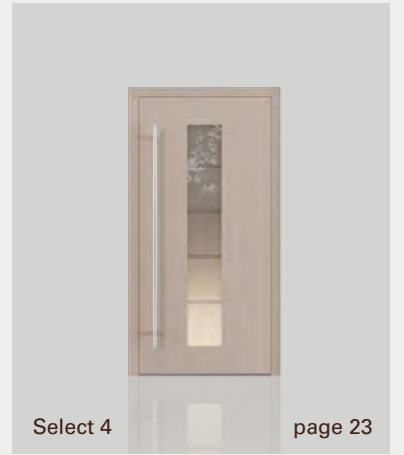
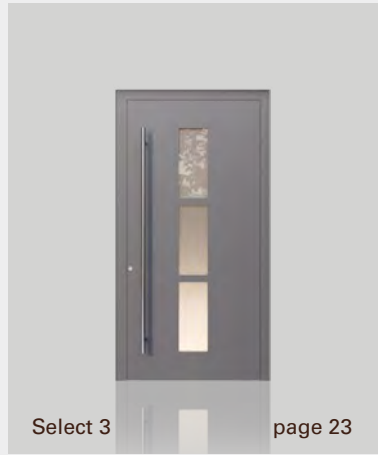
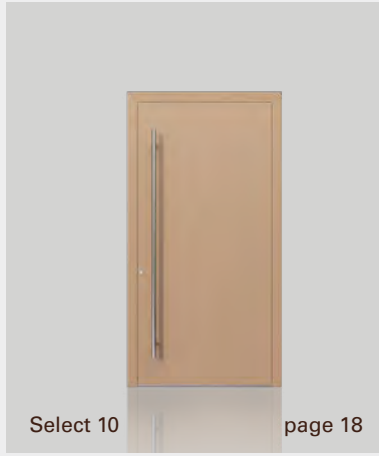
	1/3 — STANDARD PACKAGE	2/3 — PLUS PACKAGE	3/3 — BLACK DESIGN PACKAGE
22 selected door models	√	√	√
20 door finishes (powder coated, wood, ceramics)	√	√	√
Standard door dimensions — up to 1150 x 2250mm	√	√	√
Edge Pro door profile (75 mm)	√	√	√
Flush panel on both sides	√	√	√
600 mm - 1600 mm stainless steel round door pull with straight fixing feet	√	√	Stainless steel door pull ES 130, 600 -1800 mm (optional); black color, microstructure finish
Stainless steel internal handle on oval rosette	√	Inner handle on oval backplate with return spring (stainless steel) and oval rosette with lock cylinder.	Inner handle on oval backplate with return spring and oval rosette; black color, microstructure finish
Round rosette, recessed (external) stainless steel	√	√	Round lock cylinder rosette flush outside; black color, microstructure finish
Triple glazing - Ug=0.7 W/m2K (black edge spacer)	√	√	√
Transparent or satinized glass of your choice	√	√	√
Roller hinges in RAL 9016 white or EV1 silver color	√	3-piece roller door hinge, in RAL 9016 EV1 color silver	3-piece roller door hinge; black color, microstructure finish
Three-point automatic lock	√	√	√
Lock cylinder with 5 keys included	√	√	√

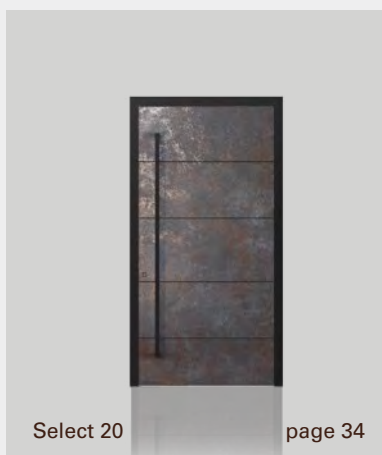
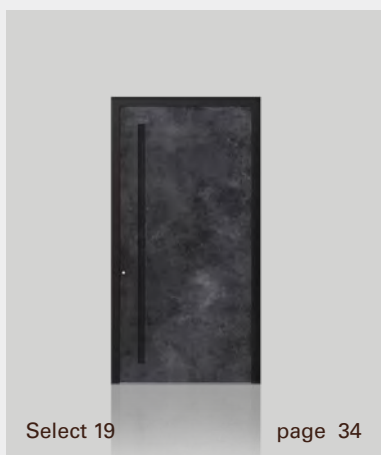
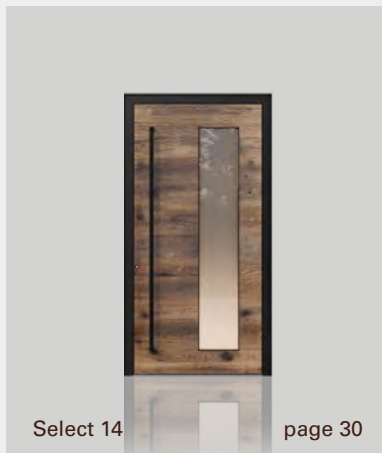
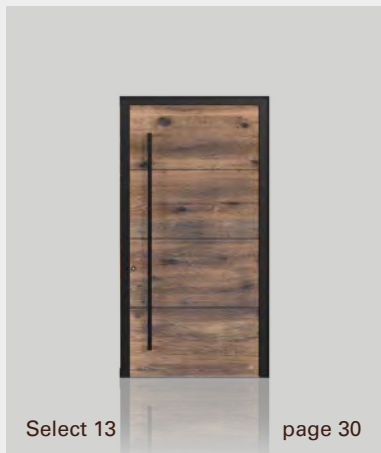
The Select collection of doors is a unique combination of master craftsmanship and individual expression, signed by the ROKA brand. Designed with the discerning customer in mind, they offer the ability to personalize every detail - from color, handle and hinges to lock and finish. Be inspired by our Select

collection of models with timeless designs that combine versatility with current architectural trends. The Select collection is a harmony of functionality and aesthetics, where every detail contributes to your entrance.



COLLECTION OVERVIEW

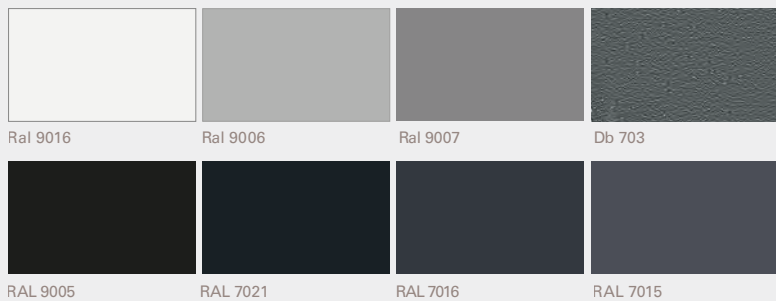




## FINISHES

### Powder coatings - exterior and interior

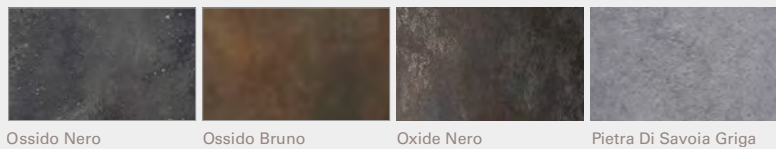
Matt or Microstructure



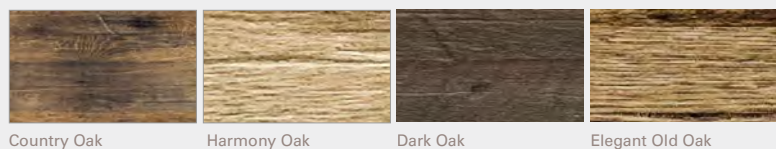
Microstructure



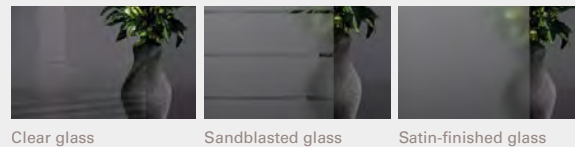
### Ceramics - exterior



### Wood - exterior\*



### Glass



\*Suitable for protected outdoor areas (front doors)

## DIFFERENT FACES OF WOOD

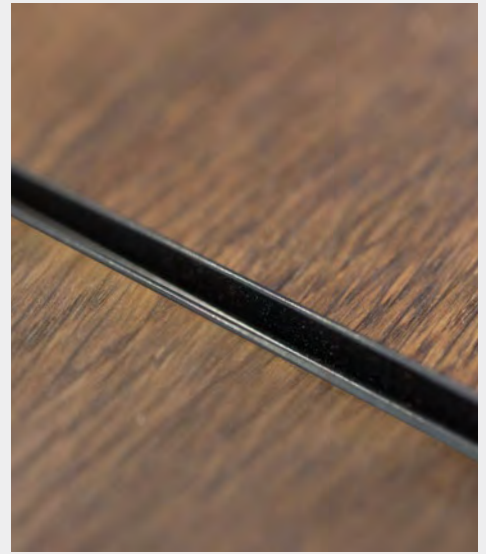
COUNTRY OAK



HARMONY OAK



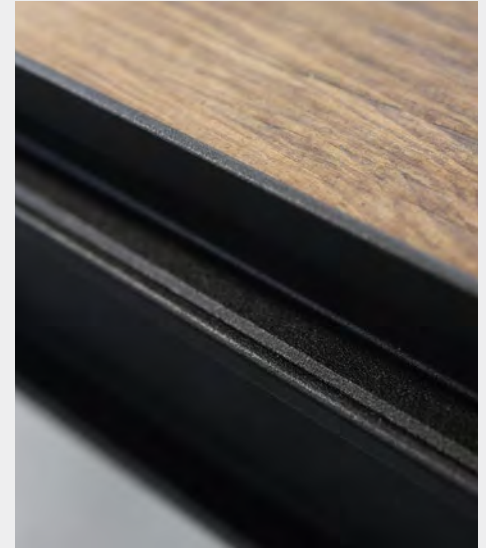
APPLICATION



DARK OAK



ELEGANT OLD OAK



Specially shaped elements enhance the aesthetics of the finish and effectively protect the edges of the veneer.

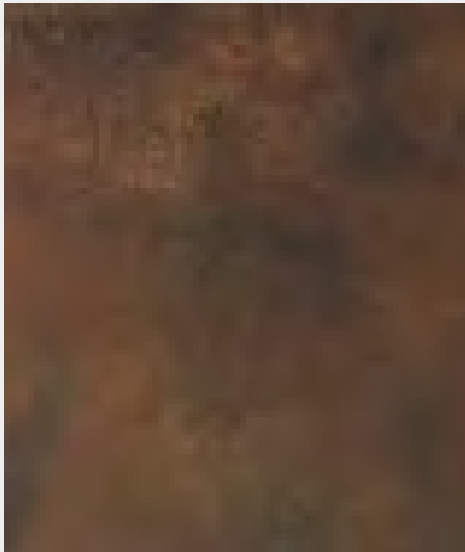
Wood has always symbolized natural beauty and strength, and its unique structure and grain make each door a unique and timeless decoration of the entrance area. By choosing veneer, you are investing in a material that captures the true character of nature, highlighting the beauty of the knots and making each door attractive and stylish.

Due to natural characteristics, the colors in our catalog are for reference only. Actual color and appearance of the same surface may vary depending on factors such as wood species, grain pattern and natural aging. These differences are not defects, but add to the authenticity and charm of real wood.

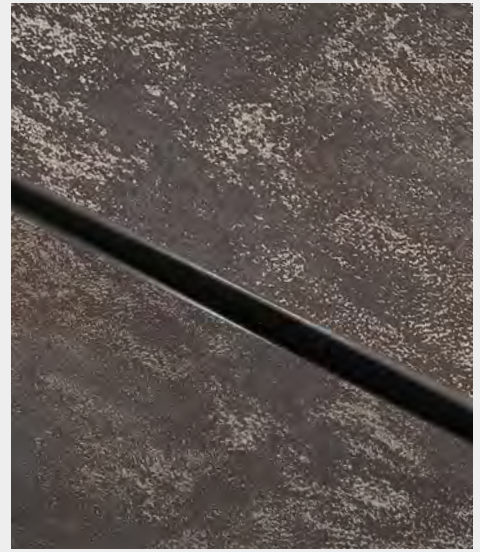
OSSIDO NERO



OSSIDO BRUNO



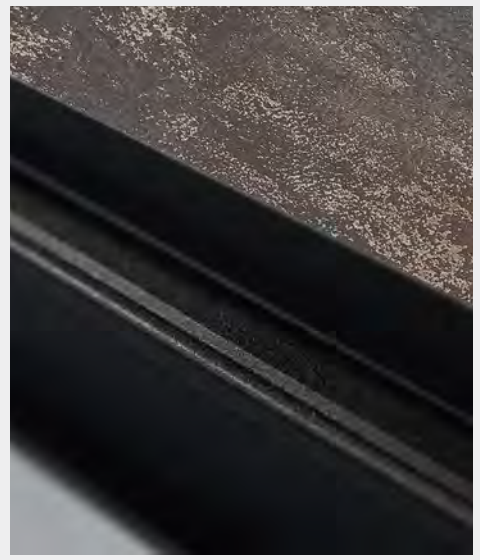
APPLICATION



OXIDE NERO



PIETRA DI SAVOIA GRIGA



Dedicated black applications provide a perfect aesthetic finish and enhance surface protection.

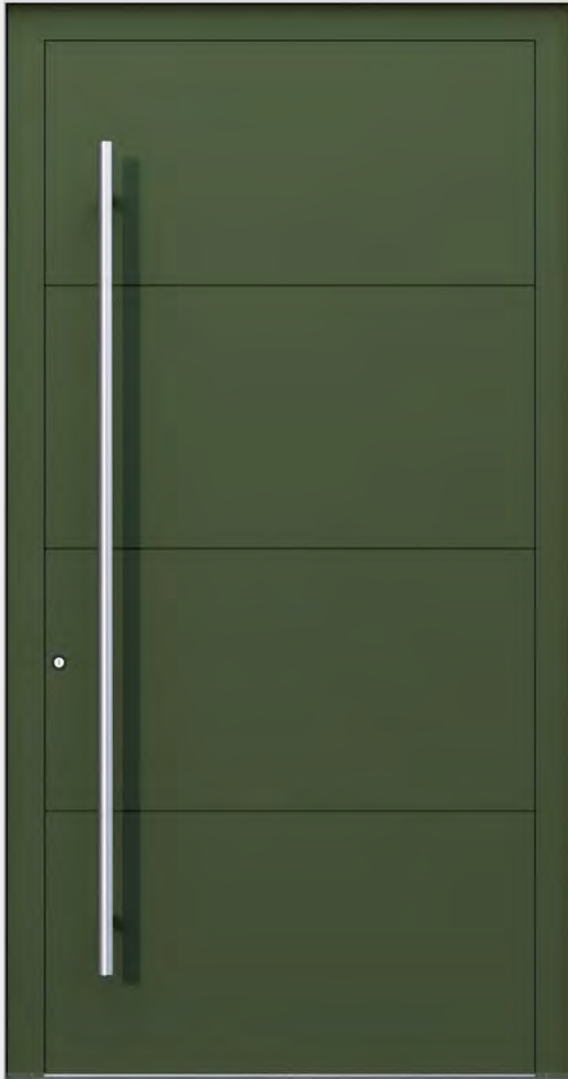
We present new ceramic surfaces that combine aesthetics, durability and functionality. Perfect for modern and classic interiors. Ceramic surfaces harmoniously combine elegance, exceptional durability and functionality. They are ideal for both modern and classic architectural designs. Inspired by the natural beauty of stone, they offer

superior quality and original design that adds prestige to any entrance.



## Select Collection Models

15 – 25



**SELECT 9**

Door Pull ES 40.1600 Stainless steel  
Surface Khaki MS  
Profile Khaki MS  
Application 5 mm grooves  
Heat transfer coefficient (Ud) = 0,88 W/m2K



**SELECT 10**

Door Pull S 40.1600 Stainless steel  
Surface Terracota MS  
Profile Terracota MS  
Heat transfer coefficient (Ud) = 0,72 W/m2K



## SELECT 1

Door Pull ES 40.1600 Stainless steel  
Glass VSG (exterior) · Sandblasted glass with transparent stripes (center) · Float (interior)  
Surface RAL 9005  
Profile RAL 9005  
Heat transfer coefficient (Ud) 0,84 W/m<sup>2</sup>K







## SELECT 2

Door Pull ES 40.1600 Stainless steel

Glass VSG (exterior) - satin glass (center) - float (interior)

Surface RAL 9016

Profile RAL 9016

Heat transfer coefficient (Ud) 0,90 W/m<sup>2</sup>K



### SELECT 3

Door Pull ES 40.1600 Stainless steel  
Glass VSG (exterior) - satin glass (center) - float (interior)  
Surface RAL 9007  
Profile RAL 9007  
Heat transfer coefficient (Ud) 0,80 W/m<sup>2</sup>K



### SELECT 4

Door Pull ES 40.1600 Stainless steel  
Glass VSG (exterior) · Sandblasted glass with transparent stripes (center) · Float (interior)  
Surface Earth MS  
Profile Earth MS  
Heat transfer coefficient (Ud) 0,80 W/m<sup>2</sup>K



### SELECT 5

Door Pull ES 40.1600 Stainless steel  
Glass VSG (exterior) · Sandblasted glass with transparent stripes (center) · Float (interior)  
Surface RAL 7016  
Profile RAL 7016  
Application flush-mounted outside  
Heat transfer coefficient (Ud) 0,84 W/m2K



### SELECT 6

Door Pull ES 40.1600 Stainless steel  
Glass VSG (exterior) · Sandblasted glass with transparent stripes (center) · Float (interior)  
Surface Marrone MS  
Profile Marrone MS  
Application Alunox application 15 mm flush on the outside recessed  
Heat transfer coefficient (Ud) 0,82 W/m2K



## SELECT 7

Door Pull ES 40.1600 Stainless steel  
Glass VSG (exterior) - satin glass (center) -  
float (interior)  
Surface Ral 9007  
Profile RAL 9007  
Heat transfer coefficient (Ud) 0,84 W/m2K



## SELECT 8

Door Pull ES 40.1600 Stainless steel  
Glass VSG (exterior) - satin glass (center) -  
float (interior)  
Surface RAL 7015  
Profile RAL 7015  
Application flush-mounted outside  
Heat transfer coefficient (Ud) 0,79 W/m2K



**SELECT 11**

Door Pull ES 600.1600 recessed handle in door color  
Glass VSG (exterior) - satin glass (center) - float (interior)  
Surface RAL 9007  
Profile RAL 9007  
Heat transfer coefficient (Ud) 0,89 W/m2K



**SELECT 12**

Door Pull ES 600.1600 recessed handle in door color  
Surface RAL 9016  
Profile RAL 9016  
Heat transfer coefficient (Ud) 0,78 W/m2K



## SELECT 17

Door Pull ES 130.1600 | Ral 9005  
Glass VSG (exterior) - satin glass (center) - float (interior)  
Surface RAL 7021  
Profile RAL 7021  
Application ral 9005  
Heat transfer coefficient (Ud) 0,84 W/m2K



## SELECT 18

Door Pull ES 40.1600 Stainless steel  
Glass VSG (exterior) - satin glass (center) - float (interior)  
Surface Metallic Earth MS  
Profile Metallic Earth MS  
Application Alunox application 5 mm flush on the outside recessed  
Heat transfer coefficient (Ud) 0,86 W/m2K







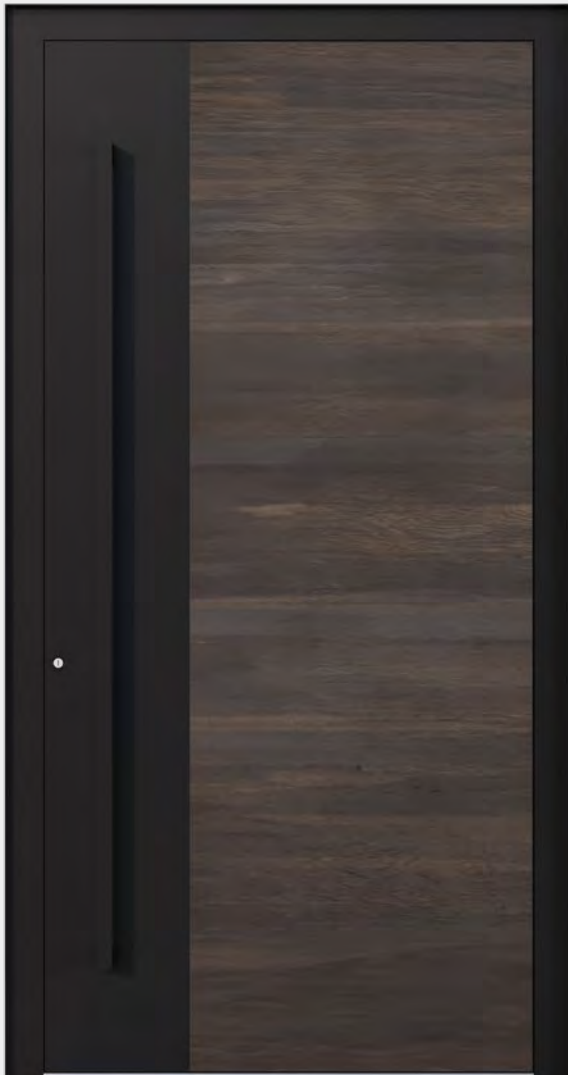
**SELECT 13**

Door Pull ES 130.1600 | Ral 9005  
Surface Wood - Country Oak  
Profile RAL 9005  
Application 8 mm Black U-shape  
recessed outside  
Heat transfer coefficient (Ud) 0,88 W/m2K



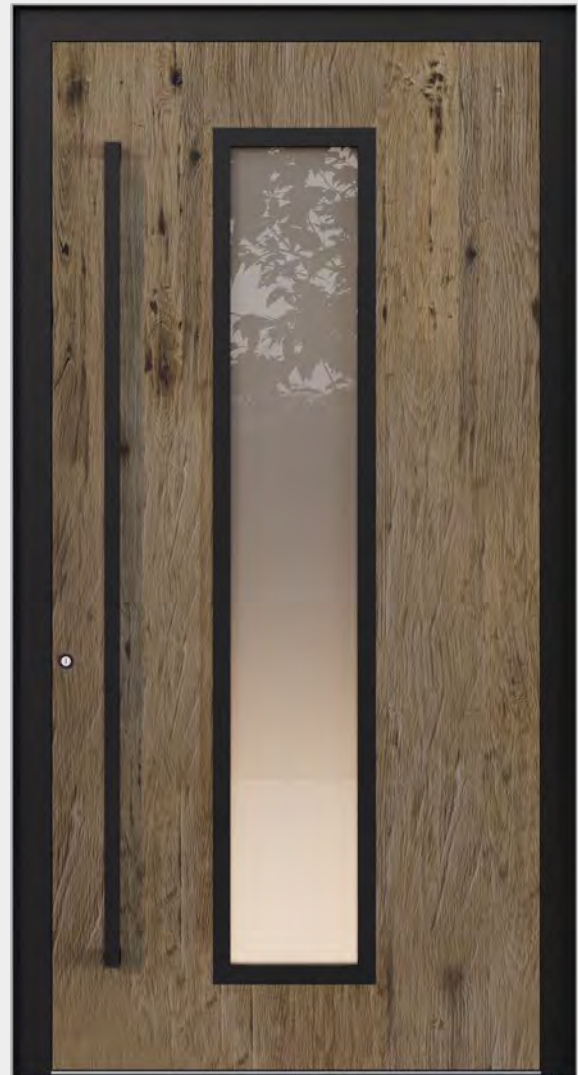
**SELECT 14**

Door Pull ES 130.1600 | Ral 9005  
Glass VSG (exterior) · Satinato (center) · Float (interior)  
Surface Wood - Country Oak  
Profile RAL 9005  
Black Surrounding frame  
Heat transfer coefficient (Ud) 0,82 W/m2K



## SELECT 15

Door Pull ES 130.1600 | Ral 9005  
Surface Wood - Dark Oak  
Profile RAL 9005  
Heat transfer coefficient (Ud) 0,72 W/m2K



## SELECT 16

Door Pull ES 130.1600 | Ral 9005  
Glass VSG (exterior) · Satinato (center) · Float (interior)  
Surface Wood - Elegant Old Oak  
Profile RAL 9005  
Application  
Heat transfer coefficient (Ud) 0,82 W/m2K







### SELECT 19

Door Pull ES 600.1600 recessed handle in door color  
Surface Ceramics - Ossido Nero  
Profile RAL 9005  
Heat transfer coefficient (Ud) 0,88 W/m2K



### SELECT 20

Door Pull ES 130.1600 | Ral 9005  
Glass VSG (exterior · Float (interior)  
Surface Ceramics - Ossido Bruno  
Profile RAL 9005  
Black Surrounding frame  
Heat transfer coefficient (Ud) 0,82 W/m2K



## SELECT 21

Door Pull ES 130.1600 | Ral 9005  
Surface Ceramics - Oxide Nero  
Profile RAL 9005  
Application 8 mm Black U-shape  
recessed outside  
Heat transfer coefficient (Ud) 0,72 W/m2K



## SELECT 22

Door Pull ES 130.1600 | Ral 9005  
Surface Ceramics - Pietra Di Savoia Griga Bocciardato  
Profile RAL 9005  
Application 8 mm Black U-shape  
recessed outside  
Heat transfer coefficient (Ud) 0,82 W/m2K

## MAIN EQUIPMENT

Details often play a key role in the overall composition of the door, becoming the protagonist that attracts attention and emphasizes the character of both the occupants and the architecture. Thanks to a carefully Selected range of door pulls, handles, rosettes and hinges, each element of the door can be refined in terms of elegance, functionality and ergonomics, which translates into comfort in daily use.

### BLACK DESIGN PACKAGE



ES 40 - DOOR PULL

Lengths of handles:  
600, 800, 1000, 1200,  
1400, 1600mm, 1800 mm

Diameter:  $\varnothing$ 30mm



ES 130 - DOOR PULL

Lengths of handles:  
400, 600, 800, 1000, 1200,  
1400, 1600 mm

Section: 30x20mm



ES 600 - DOOR PULL

Length depends on leaf  
dimensions.



**ES 2640 - HANDLE**

Inner handle on long plate with return spring, RAL 9016 white or EV1 silver



**ES 2680 - HANDLE**

Inner handle on oval rosette with return spring, stainless steel



**ES 2602 - STAINLESS STEEL**

Round rosette, recessed (external) stainless steel



**ES 2210 - CYLINDER**

Standard cylinder insert with security function, 5 keys



**ES 2400-1 - HINGE**

RK overlay hinge, 2-piece, white or EV1 silver



**ES 2400 - HINGE**

Roller hinge for (3-piece) RAL 9016 white or EV1 silver



**ES 1100 - LOCK**

Three-point automatic lock ES 1100,

**BLACK DESIGN PACKAGE**



**ES 2602 - BLACK ROSETTE**

Round rosette, recessed (external) stainless steel



**ES 2680 - HANDLE**

Inner handle on oval rosette with return spring, stainless steel



**ES 2400 - HINGE**

Roller hinge (3-piece) RAL 9005

ACCESS CONTROL SYSTEMS

SET 1



EKEY DLINE FINGERPRINT READER

The ekey dLine reader is synonymous with convenience and security. It allows easy access management via smartphone or tablet, as well as integration with smart home systems.

SET 2



BIOKEY®

The BioKey® fingerprint reader provides secure and convenient door opening and supports up to 150 users without an Internet connection. VdS certification and 20 years of security experience ensure the highest level of protection.

SET 3



BIOKEY® RFID TRANSPONDER

The BioKey® RFID Transponder is a contactless door opening solution. It allows up to 150 access cards to be programmed for flexible access management.

SET 4



BIOKEY® NUMERIC KEYPAD

BioKey® numeric keypad rugged keyboard with intelligent locking mechanisms that make it more resistant to unauthorized access attempts.

SET 1, 2, 3, 4, ARE COMPATIBLE WITH:



ES 1200 THREE-POINT AUTOMATIC LOCK

Three-point automatic lock with central, top and bottom latchbolts (mechanical locking and motorized unlocking).



ES 1760 5-POINT LOCK

Automatic 5-point lock, GU-SECURY ADR, stainless steel



ES 1772 5-POINT LOCK

M-TS Fully motorized, operated by finger scan, code keypad or smartphone, very quiet and fast (opens in 0.3 sec.)

## ADDITIONAL ACCESS CONTROL AND SECURITY SYSTEMS



ES 1000 5-POINT LOCK

With two bolts and a master lock



ES 1750 5-POINT LOCK

Automatic, consisting of a set of bolts and locking hooks



ES 2100 ELECTRIC DOOR STRIKE

With daylight function



ES 2200\_1 Livius cylinder

Lock cylinder with security card and 5 keys included



ES 2211 LOCK CYLINDER

Standard, with knob and 5 keys included

## OPTIONAL EQUIPMENT



**ES 2450 HIDDEN DOOR HINGES  
(2 PIECES)**

They combine the highest standards of design with robust construction. The opening angle of the hinge is 90 degrees.



**ES 4035 DIGITAL DOOR VIEWER**

3.5-inch LCD screen, fully flush with the door surface, overlay in the color of the sash



**ES 2300 ARM DOOR CLOSER**

With guide and locking mechanism, in white or EV1, slows down the violent opening of the door and closes it, increasing comfort and security



**PURENITE THRESHOLD**

Features high insulation properties and stability. Various heights are available.



**ES 2320 CONCEALED DOOR  
CLOSER**

With guide and locking mechanism, it is functional and slows down the abrupt opening of the door and closes it, invisible solution

When you choose a door from the Select collection, you not only get excellent quality and elegant design, but also dedicated solutions that combine functionality with security. You can customize accessories to suit your individual needs, choosing modern add-ons that will give you peace of mind and the highest level of protection.

## SIDELIGHT

- Colors - powder coatings
- Triple glazing -  $U_g/W$  0.7  $m^2K$  (black warm edge seal)
- Laminated safety glass (VSG 6 mm), exterior
- Transparent, sandblasted or satin-finished glass, center
- RC2/P4 glazing (optional)
- Height up to 2250 mm
- Concealed drainage system in side parts



NOTE: There may be slight differences between the door leaf and the fanlight in the position of the milling or Alunox application. These differences are technically justified and should be accepted.

Between the door leaf and the side part, the relief grooves or Alunox applications can be

ROKA

Headquarter & Showroom  
ul. ks. Józefa Londzina 31, 43-382  
Bielsko-Biała, Poland

CONTACTS  
ROKAdoors.com

Copyright © 2025 ROKA

ROKA, in order to improve the technical and qualitative characteristics of its products, reserves the right to make any changes necessary for the functional and qualitative improvement of the production without prior notice. For any technical or dimensional details, please refer to the company's price list and any updates. Please note that the colors and materials shown in the images are indicative only. ROKA disclaims any responsibility for printing inaccuracies and/or errors related to product characteristics.

Art direction and graphic design  
Studio Nuvole  
ROKA Marketing & Design Department

Copy  
ROKA Marketing Department

Made and printed in Poland

Version 01